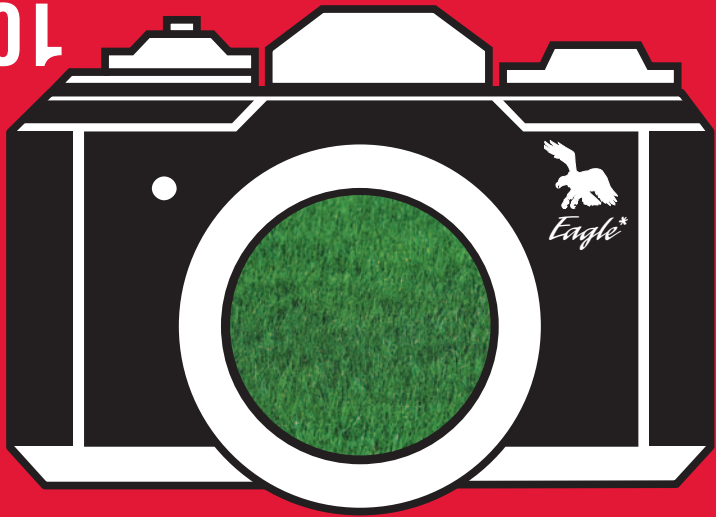
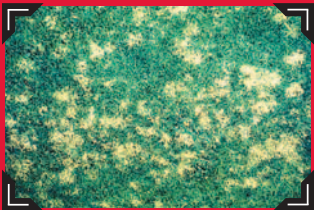


10770



Brown Patch



Dollar Spot



Fusarium Blight



Necrotic Ring Spot



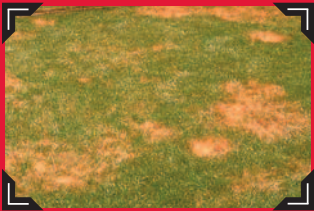
Pink Snow Mold



Powdery Mildew



Take-all Patch



Summer Patch



Red Thread



ferti·lome®

F-STOP™

For picture-perfect disease-free turfgrass

A Granular Product Containing A **Systemic** Protectant And **Curative** Fungicide For The Control Of Turfgrass Diseases In Established Lawns And In Ornamental Turfs Including Golf Course Fairways, Roughs, Tees And Greens.

- Provides **Systemic Prevention** And Control Of Turfgrass Diseases Including Benzimidazole Tolerant Dollar Spot.
- For Control Of **Turf Diseases** On Lawns, Landscapes, Golf Course Greens, Tees And Fairways.

ACTIVE INGREDIENT:
myclobutanil: a-butyl-a-(4-chlorophenyl)-1-H-1,2,4
triazole-propanenitrile.....0.39%
INERT INGREDIENTS:.....99.61%

This product contains 0.195 pound of the active ingredient myclobutanil per 50 pound bag.

TOTAL 100.00%

*Trademark of Dow AgroSciences LLC

KEEP OUT OF REACH OF CHILDREN

CAUTION

SEE BACK PANEL FOR ADDITIONAL PRECAUTIONARY STATEMENTS



NET WEIGHT 8 LBS. (3.63 KG)

TERMS AND CONDITIONS OF USE

If terms of the following Warranty Disclaimer, Inherent Risks of Use, and Limitation of Remedies are not acceptable, return unopened package at once to the Seller for a full refund of purchase price paid. Otherwise, use by the Buyer or any other user constitutes acceptance of the terms under Warranty Disclaimer, Inherent Risks of Use and Limitations of Remedies.

WARRANTY DISCLAIMER

Seller warrants that this product conforms to the chemical description of the label and is reasonably fit for the purposes stated on the label when used in strict accordance with the directions, subject to the Inherent Risks set forth below. Seller MAKES NO OTHER EXPRESS OR IMPLIED WARRANTY OF MERCHANTABILITY OR FITNESS FOR A PARTICULAR PURPOSE OR ANY OTHER EXPRESS OR IMPLIED WARRANTY.

INHERENT RISKS OF USE

It is impossible to eliminate all risks associated with use of this product. Plant injury, lack of performance, or other unintended consequences may result because of such factors as use of the product contrary to label instructions (including conditions noted on the label, such as unfavorable temperature, soil conditions, etc.), abnormal conditions (such as excessive rainfall, drought, tornadoes, hurricanes), presence of other materials, the manner of application, or other factors, all of which are beyond the control of the Seller. All such risks shall be assumed by Buyer.

LIMITATION OF REMEDIES

The exclusive remedy for losses or damages resulting from this product (including claims based on contract, negligence, strict liability, or other legal theories), shall be limited to, at Seller's election, one of the following:

1. Refund of purchase price paid by Buyer or user for product bought, or
 2. Replacement of amount of product used.
- Seller shall not be liable for losses or damages resulting from handling or use of this product unless Seller is promptly notified of such loss or damage in writing. In no case shall Seller be liable for consequential or incidental damages or losses.

The terms of the Warranty Disclaimer and Inherent Risks of Use above and this Limitation of Remedies cannot be varied by any written or verbal statements or agreements. No employee or sales agent of Seller or the Seller is authorized to vary or exceed the terms of the Warranty Disclaimer or this Limitation of Remedies in any manner.

PRECAUTIONARY STATEMENTS
HAZARDS TO HUMANS AND DOMESTIC ANIMALS

Causes Moderate Eye Irritation • Harmful If Absorbed Through The Skin • Avoid contact with skin, eyes or clothing.
Notice: Read the entire label. Use only according to label directions. **Before using this product, read "Warranty Disclaimer," "Inherent Risks of Use," and "Limitation of Remedies" at end of Directions for Use. If terms are unacceptable, return at once unopened.**
In case of emergency endangering health or the environment involving this product, call 1-800-992-5994.
Agricultural Chemical: Do not ship or store with food, feeds, drugs or clothing.

PERSONAL PROTECTIVE EQUIPMENT (PPE)

USER MUST WEAR: • Long-sleeved shirt and long pants • Chemical-resistant gloves made of any waterproof material • Shoes plus socks.
Follow manufacturer's instructions for cleaning/maintaining PPE. If no such instructions for washables, use detergent and hot water. Keep and wash PPE separately from other laundry.

USER SAFETY RECOMMENDATIONS

Users Should: Wash hands before eating, drinking, chewing gum, using tobacco or using the toilet.

FIRST AID

IF IN EYES: Hold eye open and rinse slowly and gently with water for 15-20 minutes. Remove contact lenses, if present, after the first 5 minutes, then continue rinsing eye. Call a Poison Control Center or doctor for treatment advice.
IF ON SKIN OR CLOTHING: Take off contaminated clothing. Rinse skin immediately with plenty of water for 15-20 minutes. Call a Poison Control Center or doctor for treatment advice.
HOT LINE NUMBER: Have the product container or label with you when calling a Poison Control Center or doctor, or going for treatment. You may also contact 1-800-992-5994 day or night, for emergency treatment information.

ENVIRONMENTAL HAZARDS

This pesticide is toxic to fish. Drift and runoff from treated areas may be hazardous to aquatic organisms in neighboring areas. Do not apply directly to water, to areas where surface water is present, or to intertidal areas below the mean high water mark. Do not contaminate water when disposing of equipment wash-waters or disposing of wastes.

DIRECTIONS FOR USE

It is a violation of Federal law to use this product in a manner inconsistent with its labeling.

Do not apply this product in a way that will contact workers or other persons, either directly or through drift. Only protected handlers may be in the area during application. For any requirements specific to your State or Tribe, consult the agency responsible for pesticide regulation.

NON-AGRICULTURAL USE REQUIREMENTS

The requirements in this box apply to uses of this product that are not within the scope of the Worker Protection Standard for agricultural pesticides (40 CFR Part 170). The WPS applies when this product is used to produce agricultural plants on farms, forests, nurseries or greenhouses. Seed treatments and professional applications to lawn grasses, golf courses, industrial (office park), municipal and residential lawns are not within the scope of the Worker Protection Standard. • Keep unprotected persons out of treated area until dusts have settled.

STORAGE AND DISPOSAL

Do not contaminate water, food or feed by storage and disposal.
STORAGE: Keep away from fire and sparks. Store in a cool, dry, well-ventilated area. In case of spill, sweep up material and dispose of material according to "Pesticide Disposal" instructions.
PESTICIDE DISPOSAL: Wastes resulting from the use of this product may be disposed of on site according to label directions or at an approved waste disposal facility.
CONTAINER DISPOSAL: Do not reuse empty containers. Completely empty bag into application equipment. Dispose of emptied bag(s) in a sanitary landfill or by incineration, or, if allowed by State and local authorities, by burning. If burned, stay out of smoke.

GENERAL INFORMATION

• **ferti-lome® F-STOP®** Specialty Fungicide is a systemic, protectant and curative Fungicide recommended for the control of listed Turfgrass Diseases in established Lawns and Ornamental Turfs, including golf course fairways, roughs, tees and greens. Optimum Disease control is achieved when this product is applied to established Turfgrasses in a regularly scheduled preventative program.

USE DIRECTIONS FOR TURFGRASS

- **ferti-lome® F-STOP®** should be used in conjunction with turf management practices that promote good Plant health and optimum Disease control. The key to selecting a Fungicide is the proper diagnosis of the organism causing the Disease. Diagnostic kits, extension experts, or other identification methods should be used when developing Disease control strategies.
- Optimum Disease control is achieved when **ferti-lome® F-STOP®** is applied in a preventative Disease control program at a rate of 4 to 8 lbs. per 1,000 square feet. See the following table for specific application rates for various Diseases.
- For the control of Root and Crown Rot, this product must be watered-in using a minimum of 3 to 4 gallons of water per 1,000 square feet.
- Under conditions that are favorable for Disease development, the interval between applications of **ferti-lome® F-STOP®** should be reduced.
- Unless otherwise specified, when Disease pressure is high or when used as a curative, use higher rates of **ferti-lome® F-STOP®** and shorter application interval. Under light to moderate Disease pressure, apply **ferti-lome® F-STOP®** at the low use rate and/or longer application intervals.
- Apply **ferti-lome® F-STOP®** uniformly using an appropriate fertilizer spreader. Calibrate the spreader before application as calibration may change with spreader age and use, walking speed and evenness of terrain. To calibrate the spreader, weigh out the amount of product necessary to treat an area of 800 square feet. Using the suggested spreader setting provided by the manufacturer or from the table below, apply to a pre-measured area of 500 square feet (5 x 100 square feet) area. Weigh back product remaining in application equipment and adjust the spreader as necessary to give the correct rate of delivery for the measured area.
- To avoid pick-up, lightly irrigate treated areas soon after application.
- On short cut Bentgrass (1/2" or less) when temperatures are above 80°F; apply only to dry foliage.

RECOMMENDED SPREADER SETTINGS			
Spreader Make & Model	4 lbs. per 1,000 Sq. Ft.	6 lbs. per 1,000 Sq. Ft.	8 lbs. per 1,000 Sq. Ft.
ferti-lome® Plus Iron Broadcast/Earthway 2850	11	13	15
ferti-lome® Plus Iron Prof. Broadcast/Earthway 2800A	11	13	15
ferti-lome® Deluxe Broadcast/Earthway 2050 S.U.	11	13	15
ferti-lome® By Spyker	4	6	8
Earthway Drop 7300B	14	17	19
Republic/Scotts Broadcast	5½	6	6½
Republic/Scotts Drop	2½	3	3½
Precision Drop FH-22D	13	14	15
Precision Broadcast/Red Devil	14	15	16

Apply **ferti-lome® F-STOP®** with drop or rotary spreaders designed to apply granules. Avoid the use of spreaders that would apply this product in narrow rows or concentrated bands. Before each application, calibrate the spreader according to the equipment manufacturer's directions such that the spreader delivers the recommended application rate. Apply this product uniformly over the lawn or ornamental turf area. A more uniform application can be made by spreading half of the required amount over the area in a given direction and then applying the remaining half at a right angle to the previous direction. Avoid streaking, skips or overlaps during application. Check equipment frequently to ensure equipment is functioning properly and applying uniform distribution of granules.

COVERAGE: **ferti-lome® F-STOP®** Specialty Fungicide covers approximately 2,666 sq. ft.

Disease	ferti-lome® F-STOP® (lb/1,000 sq ft)	Application Interval/Timing	Instructions	Restrictions
Anthraxnose	4	14 - 21 days	Apply when conditions are favorable for Disease development.	Do not apply more than 46 pounds of product per 1,000 sq. ft. per year. For Nassau and Suffolk Counties in New York State, use of this product is limited to 11.5 pounds per 1,000 sq. ft. per year (1.95 lb. active ingredient per acre).
Red Thread				
Septoria Leaf Spot				
Brown Patch	4 - 8	14 days	Begin applications when conditions are favorable for Disease development and before Disease symptoms are apparent.	
Copper Spot	4	14 days	Apply when conditions are favorable for Disease development.	
Zonate Leaf Spot				
Dollar Spot	3 - 8	14 - 28 days	Apply when conditions are favorable for Disease development. Make no more than 3 consecutive applications for Dollar Spot control before rotating to a registered Fungicide with a different mode of action.	
Fusarium Blight	4 - 8	14 - 21 days	Apply when conditions are favorable for Disease development.	
Fusarium Patch (<i>Pink Snow Mold</i>)	4 - 8	Fall-Winter	Apply prior to snow cover.	
Leaf Spot	4	14 days	Apply when conditions are favorable for Disease development. For Crown Rot, water in with 3 to 4 gallons of water per 1,000 sq. ft. to increase penetration to crown and roots.	
Melting-Out				
Crown Rot				
Leaf Smuts	4	14 days	Apply in the Fall after grass enters dormancy and/or in the Spring prior to the initiation of growth.	
Necrotic Ring Spot	4 - 8	Spring: 28 days	Make applications on a preventative basis in early to mid-Spring.	
Powdery Mildew Rusts	4	14 - 28 days	Apply when conditions are favorable for Disease development.	
Necrotic Ring Spot	4 - 8	Fall: 28 days	Make 2 applications beginning in August before turf goes dormant. Apply 8 lbs./1,000 sq. ft. followed by a second application one month later.	
Summer Patch	4 - 8	14 - 28 days	Begin applications in the Spring when conditions are favorable for Disease development. Make 2 to 4 applications depending on recommendations from local Turfgrass Extension Experts. Water in with at least 3 to 4 gallons of water per 1,000 sq. ft. to increase spray penetration to crown and roots.	
Take-All Patch	8	Spring/Fall: 28 days	To reduce the severity of Take-All Patch, make 1 to 2 Fall applications in September and October or when night temperatures drop to 55°F and 1 to 2 Spring applications in April and May depending on local recommendations.	
Zoysia Large Patch	8	Fall: 28 days	Make applications in Fall before turf becomes dormant. Water in with at least 3 to 4 gallons of water per 1,000 sq.ft. to increase penetration to crown and roots.	

*Trademark of Dow AgroSciences LLC

Distributed By:
VOLUNTARY PURCHASING GROUPS, INC.
P.O. BOX 460 • HWY. 56 WEST
BONHAM, TEXAS 75418
Visit Us At: www.v-p-g.com
EPA Reg. No. 62719-461-7401
EPA Est. No. 7401-TX-1

